

# Welcome!

Johnson-Reiland welcomes you to this brand new community of twinhomes and 4-plex homes built with quality construction. Located on a quiet street in the thriving community of Northfield – one of the top places in the nation for retirement – the development offers wonderful walkability and easy access to nearby schools, Northfield and Dundas businesses, and regional parks and trails. Many lots are available in this ideal location for those looking to downsize or transition to single-level living.



## HOME DETAILS

- 1,909 sq. ft. with 28' deep garage
- 3 bedrooms and 2 bathrooms & sun room
- Large owner's suite with walk-in closet & roll-in shower
- Open concept central living area with modern finishes
- Generous garages featuring vaulted overhead shelving for additional storage
- Northfield Public Schools (ISD #659) – Sibley Elementary
- Great walkability with access to schools, downtown, and nearby parks and trails

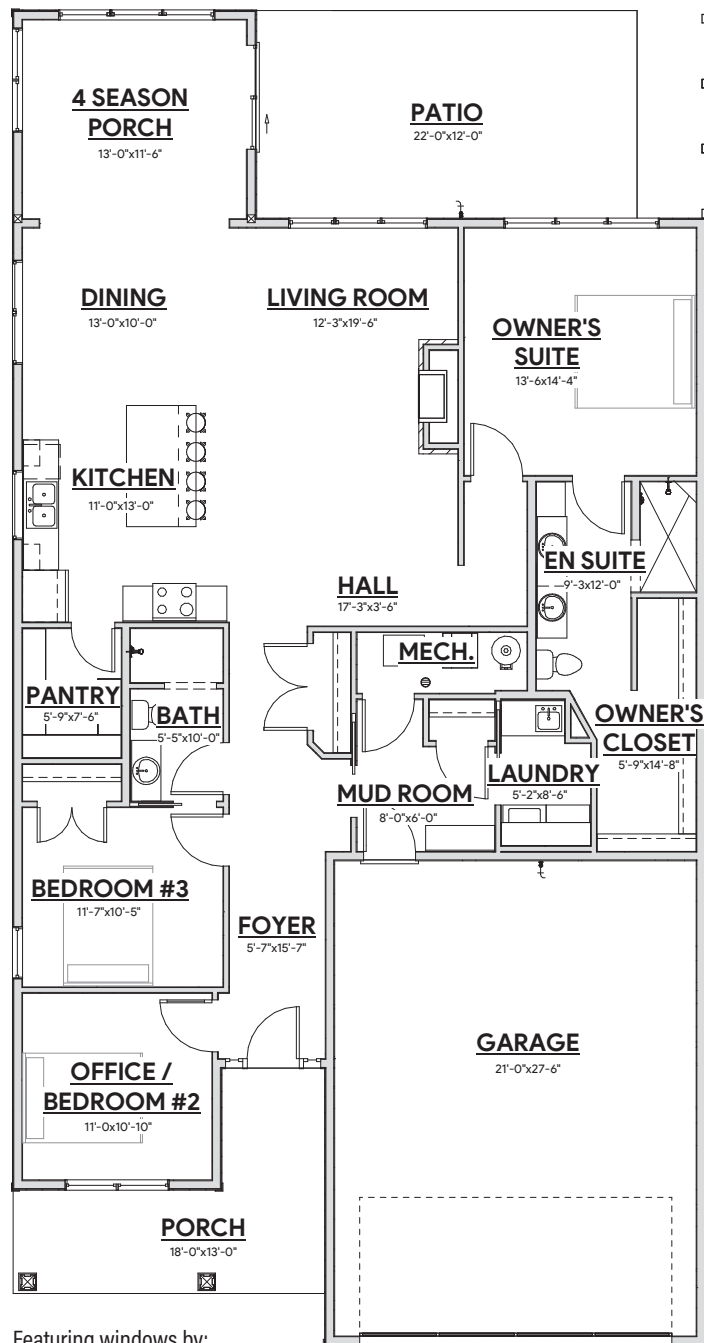


# 214 Ford Street

NORTHFIELD, MN



*Elegant  
Design Details  
Exceptional  
Craftsmanship*



Featuring windows by:



For almost 50 years Johnson-Reiland has been a family-owned custom build and design firm that is the winner of multiple Reggie awards from Housing 1st Twin Cities builders association.



Builders ID BC636389

507.366.1288 | jrbr.builders

