



## HOME DETAILS

- 4 bedrooms and 3 bathrooms on 2 levels
- 3,219 sq. ft. with 3 garage stalls
- Accessibility features, including 3' wide doorways, main floor laundry and no barrier walk-in shower, and no steps from garage into house
- Award Winning Northfield School District (ISD #659) – Sibley Elementary
- Miles of paved walking trails in the neighborhood
- Easy access to nearby Spring Creek Park Soccer Complex and planned regional park

Johnson-Reiland welcomes you to this four bedroom, three bath, single family home. Located in a growing neighborhood on the southeastern corner of Northfield, the property offers convenient access to miles of walking trails, nearby schools and soccer fields, and local and regional parks. The home also features Universal Design – accessibility options that provide a beautiful, creative and uplifting home for anyone looking to age in place.



Builders ID BC636389

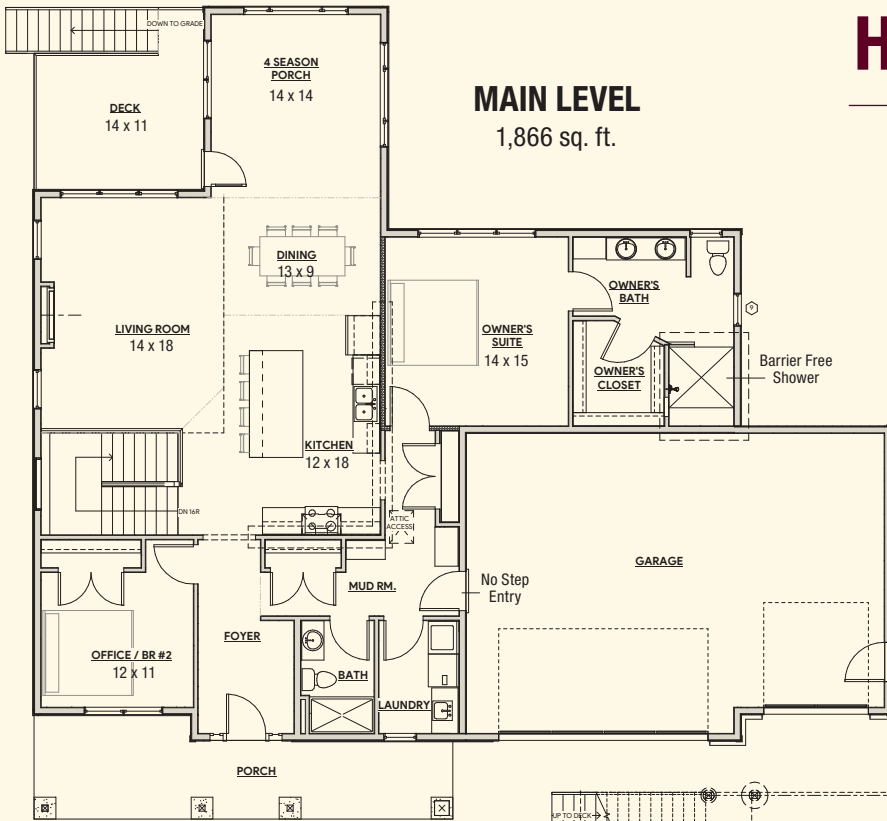
507.366.1288 | [www.jrbandr.com](http://www.jrbandr.com)



# Hills of Spring Creek

Featuring windows by:

**MARVIN** 

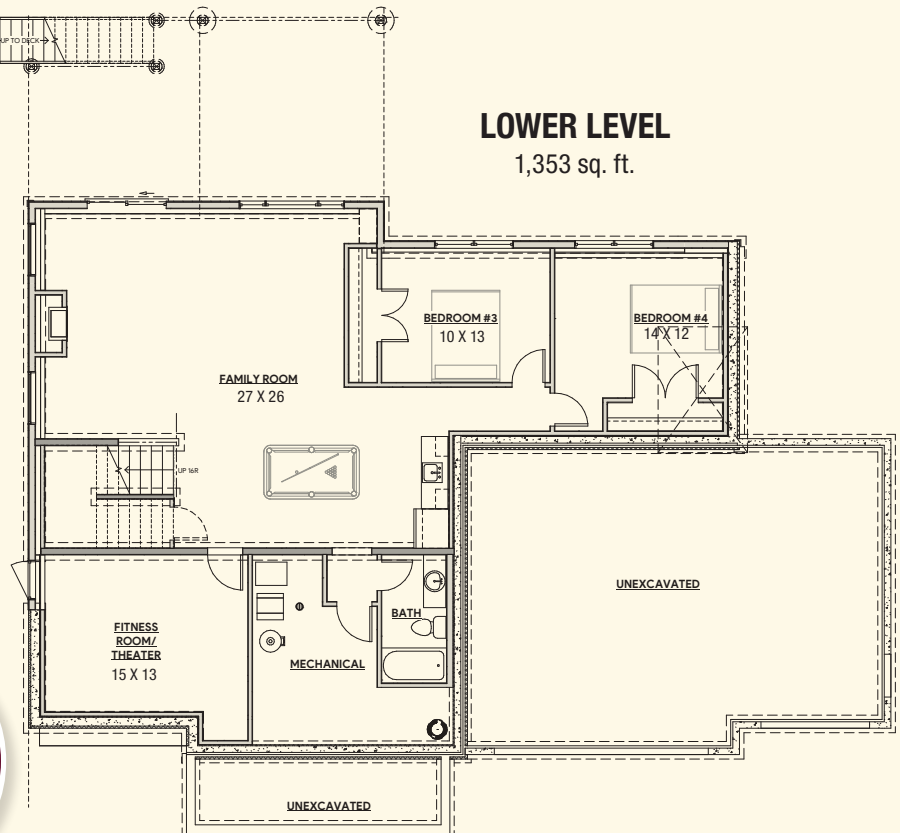


## LOWER LEVEL

1,353 sq. ft.



*Elegant  
Design Details &  
Exceptional  
Craftsmanship*



Builders ID BC636389



Johnson-Reiland is a family-owned custom build and design firm that is the winner of four Reggie awards – come design your custom home with us today!

507.366.1288 | [www.jrbandr.com](http://www.jrbandr.com)

