



## IDEAL FAMILY LIVING

Welcome to this luxurious, 3-bedroom family home! The open concept main living area and upstairs loft are perfect for entertaining, and the 2 stall garage offers immediate access to the mud and laundry rooms. Our custom homes feature elegant details, exceptional craftsmanship and the most up to date technology access and amenities. Johnson-Reiland also specializes in designing and building universal design. Instead of winding ramps and institutional impersonal looking designs we deliver beautiful, creative and uplifting homes for aging in place. Family members of all ages and abilities can enjoy. Schedule a tour of one of our homes today!

## HOME DETAILS

- 2,606 sq. ft. with 2 stall garage
- 3 bedrooms with walk-in closets
- 3 full bathrooms throughout
- Open concept central living area
- Spacious upstairs loft
- Unique custom builds to suit your needs and desires



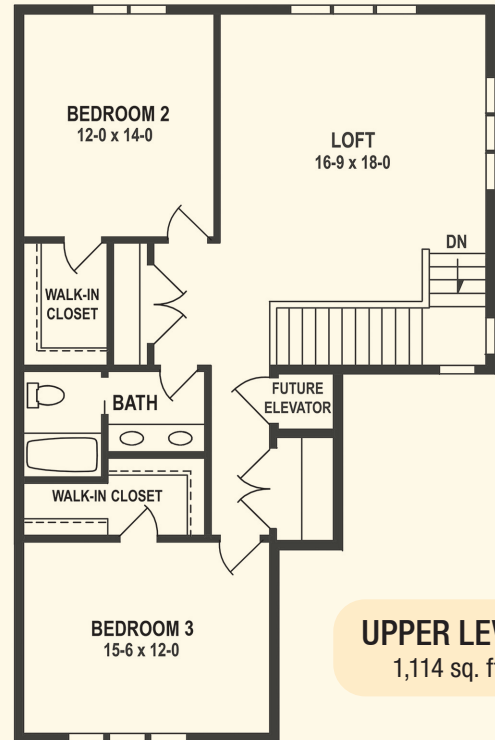
Builders ID BC636389

507.366.1288 | [jrbr.builders](http://jrbr.builders)

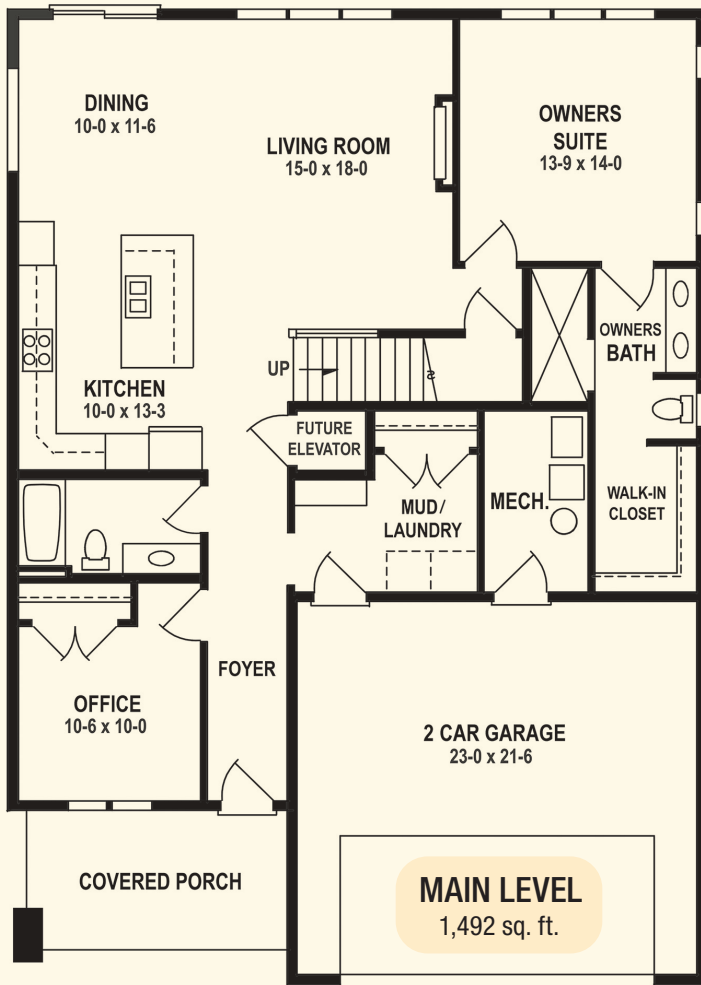


# Windflower Plan Layout

Featuring windows by:



**UPPER LEVEL**  
1,114 sq. ft.



**MAIN LEVEL**  
1,492 sq. ft.



*Elegant*  
Design Details &  
*Exceptional*  
Craftsmanship

Johnson-Reiland is a family-owned custom build and design firm that is the winner of four Reggie awards – come design your custom home with us today!



Builders ID BC636389

507.366.1288 | jrbr.builders

