



## IDEAL FAMILY LIVING

Welcome to this luxurious, 3-bedroom family home! The open concept main living area and spacious upstairs loft are perfect for entertaining, and the 2 stall garage offers extra space for a workshop or added storage. Our custom homes feature elegant details, exceptional craftsmanship and the most up to date technology access and amenities. Johnson-Reiland also specializes in designing and building universal design. Instead of winding ramps and institutional impersonal looking designs we deliver beautiful, creative and uplifting homes for aging in place. Family members of all ages and abilities can enjoy. Schedule a tour of one of our homes today!

## HOME DETAILS

- 4 bedrooms, 3 bathrooms and loft space
- 2,437 sq. ft. with 2 stall garage with mud room access and additional storage space
- Open concept central living area
- Spacious family room with access to screened porch
- Owners suite with a large walk in closet



Builders ID BC636389

507.366.1288 | [jrbr.builders](http://jrbr.builders)

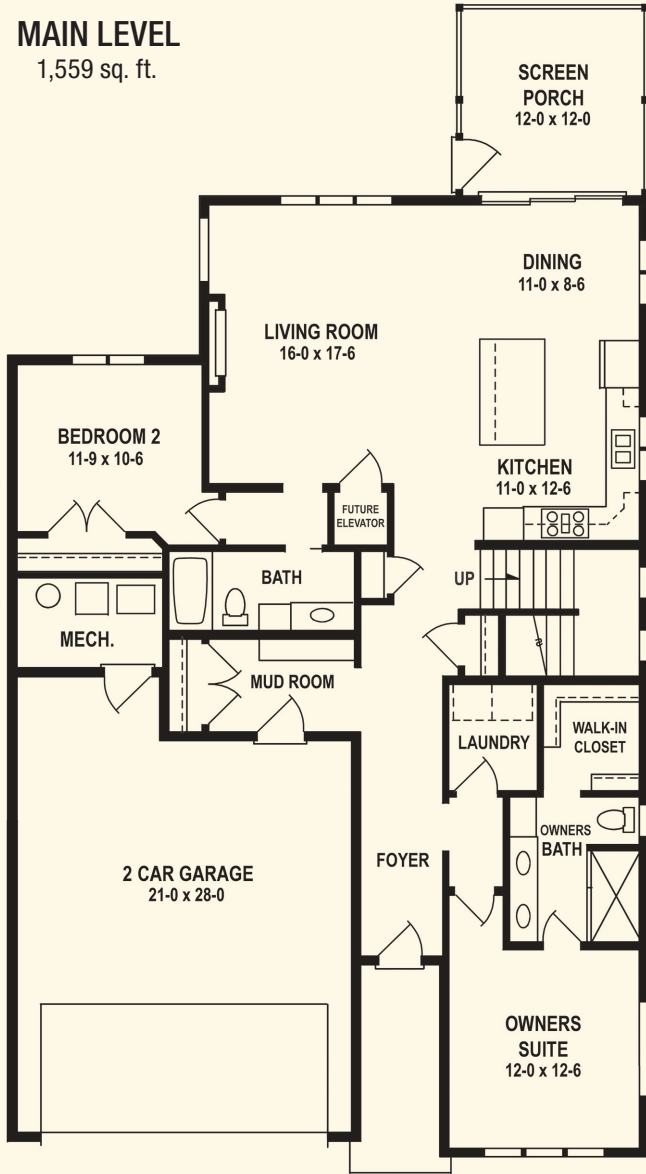


# Indigo Plan Layout

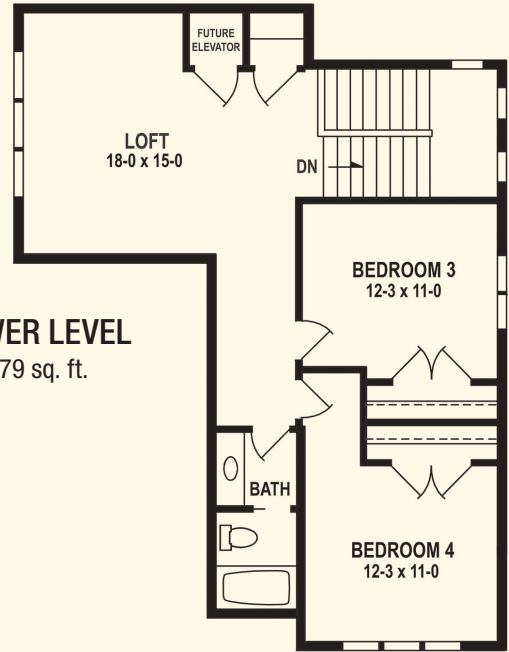
Featuring windows by:



**MAIN LEVEL**  
1,559 sq. ft.



**LOWER LEVEL**  
879 sq. ft.



*Elegant*  
Design Details &  
*Exceptional*  
Craftsmanship



Johnson-Reiland is a family-owned custom build and design firm that is the winner of four Reggie awards – come design your custom home with us today!



Builders ID BC636389

507.366.1288 | jrbr.builders

