



IDEAL FAMILY LIVING

Welcome to this luxurious, 3-bedroom family home! The open concept main living area is perfect for entertaining, and the 2 stall garage offers immediate access to the mud and laundry rooms. Our custom homes feature elegant details, exceptional craftsmanship and the most up to date technology access and amenities. Johnson-Reiland also specializes in designing and building universal design. Instead of winding ramps and institutional impersonal looking designs we deliver beautiful, creative and uplifting homes for aging in place. Family members of all ages and abilities can enjoy. Schedule a tour of one of our homes today!

HOME DETAILS

- 3 bedrooms and 2 bathrooms
- 1,909 sq. ft. with 26-foot-deep 2 stall garage with a option car lift on the right side
- Open concept central living area
- Spacious family room with extra built in storage
- Large owner's suite with walk-in closet



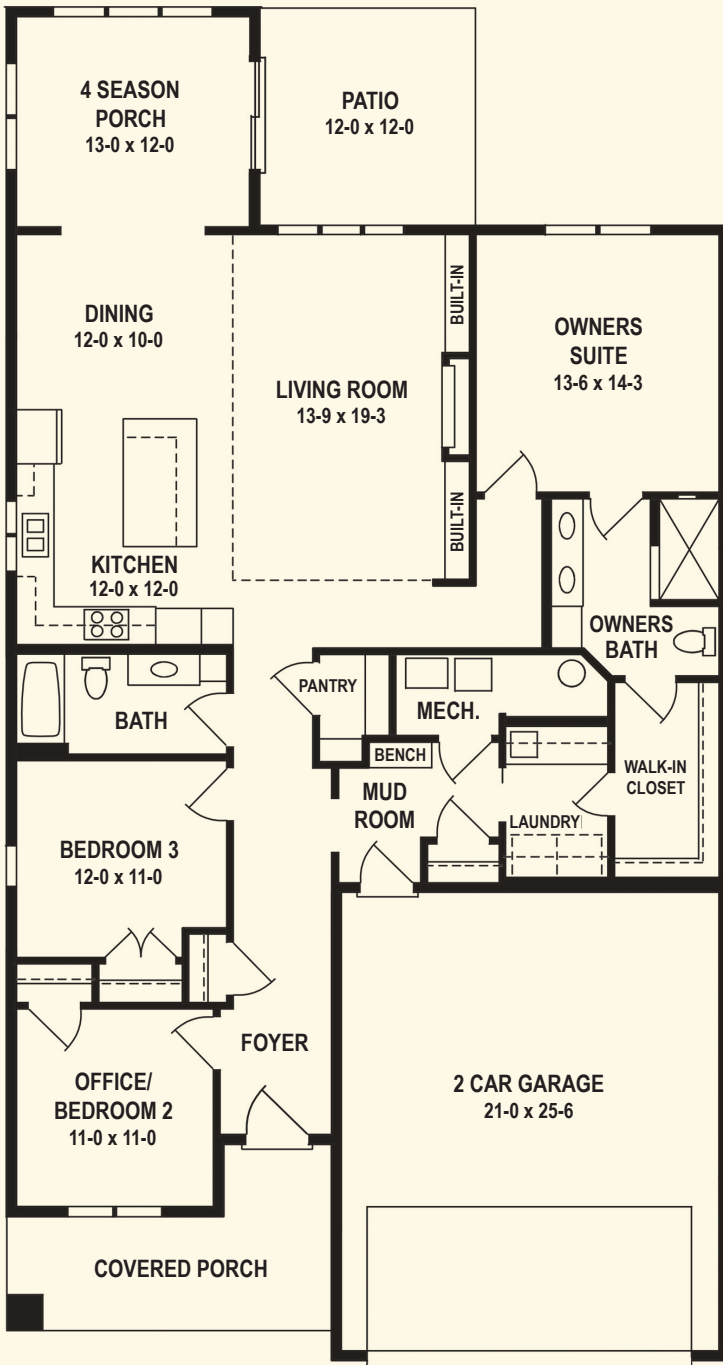
Builders ID BC636389

507.366.1288 | jrbr.builders



Junebush Plan Layout

Featuring windows by:



Elegant
Design Details &
Exceptional
Craftsmanship



Johnson-Reiland is a family-owned custom build and design firm that is the winner of four Reggie awards – come design your custom home with us today!



Builders ID BC636389

507.366.1288 | jrbr.builders

