



**COLDWELL BANKER
REALTY**

Sweetgum

10003 DELL ROAD EDEN PRARIE, MN

Plan Summary



Ideal FAMILY LIVING

Welcome to this elegant, modern family home! Featuring a luxurious vaulted owners suite, three bathrooms, and comfortable family and entertainment spaces throughout. This age in place barrier-free design can work for any family. The main living area boast a large kitchen with a built in pantry, accompanied by vaulted ceilings in the dining area. The front study is complete with built in shelving. The lower level provides ample space for hobbies and personal activities. Along with plenty of entertainment value including the wet bar, wine cellar, sauna and access to a screened porch and 4 season patio with a large outdoor fire pit. Schedule a tour of our custom-built homes today!

Home DETAILS

- 4,165 sq. ft., 3 stall garage with mud room access
- Luxurious owner's suite with vaulted ceilings and a roomy walk in closet
- Spacious family room with a wet bar, wine cellar, sauna, and extra space for a game or workout room
- Screened patio, outdoor kitchen, gas firepit, additional 4 season porch on the top level
- 3 to 5 bedrooms, 3 bathrooms, sizable laundry room
- Open concept living room and kitchen with large walk in pantry



For almost 50 years Johnson-Reiland has been a family-owned custom build and design firm that is the winner of multiple Reggie awards from Housing 1st Twin Cities builders association.



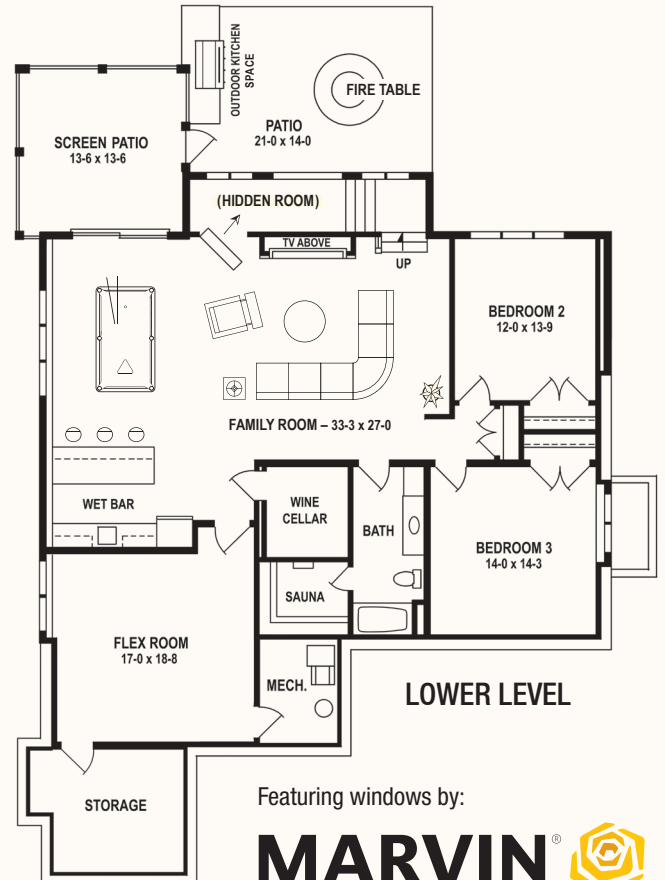
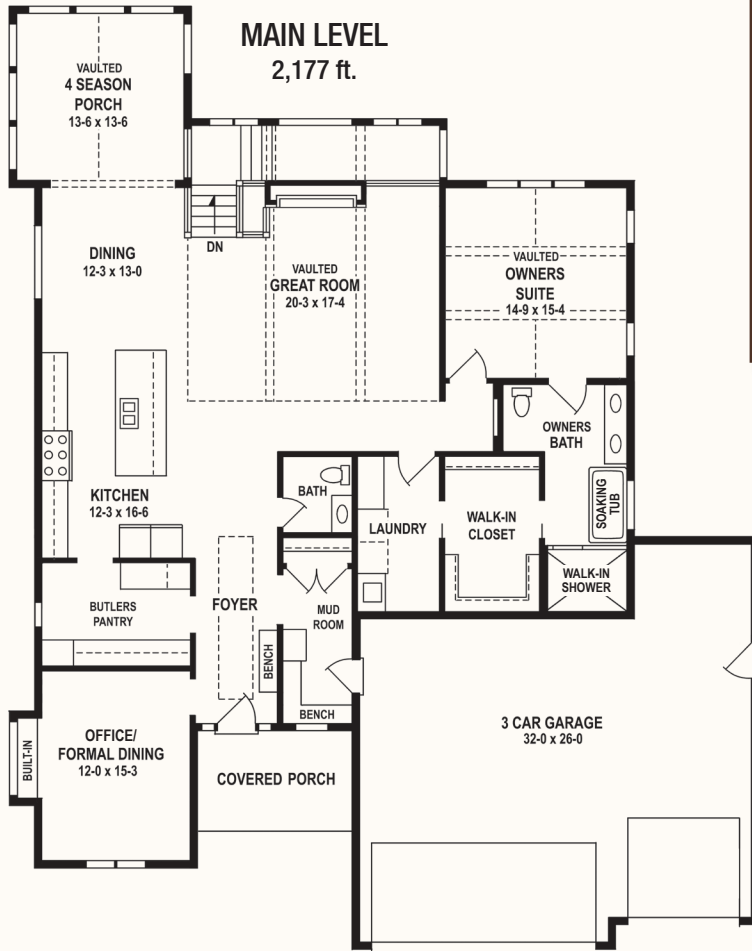
Michael McGregor, REALTOR®

612-554-8324 • MICHAEL@cbrealty.com

Sweetgum Plan Layout



*Elegant
Design Details &
Exceptional
Craftsmanship*



Featuring windows by:



JOHNSON-REILAND
BUILDERS & REMODELERS

Builders ID BC636389

507.366.1288 | jrbr.builders

