

**Edina Realty**<sup>®</sup>

**EDINA REALTY PRESENTS**

a Berkshire Hathaway affiliate

## Plan Summary

# Coneflower

FARQUAR LAKE

APPLE VALLEY, MN



## *Ideal* FAMILY LIVING

Welcome to this elegant, 6-bedroom family lake home! Conveniently located in Apple Valley, home of the Minnesota Zoo and just 5 minutes from Mall of America & Twin Cities premium outlets. Featuring 4 luxurious bedrooms, 2 guest rooms and a front study, plus spacious family and entertainment rooms throughout. The main living area has a large kitchen with a walk in pantry and dining area including comfortable access to the outdoors with a gorgeous deck overlooking the lake. The lower level provides ample space for hobbies, personal activities and plenty of entertainment value with additional space for storage. Schedule a tour of one of our custom-built homes today!

## *Home* DETAILS

- 6 Bedrooms and 5 bathrooms, plus upstairs laundry
- 3 Stall garage with mud room access
- Spectacular lakeshore development with million dollar views and 1-acre lots
- Equal-distant from Minneapolis & St. Paul downtowns and is centrally located to most attractions



Johnson-Reiland is a family-owned custom build and design firm that is the winner of four Reggie awards. Come design your custom home with us today!

**Edina Realty**<sup>®</sup>

a Berkshire Hathaway affiliate

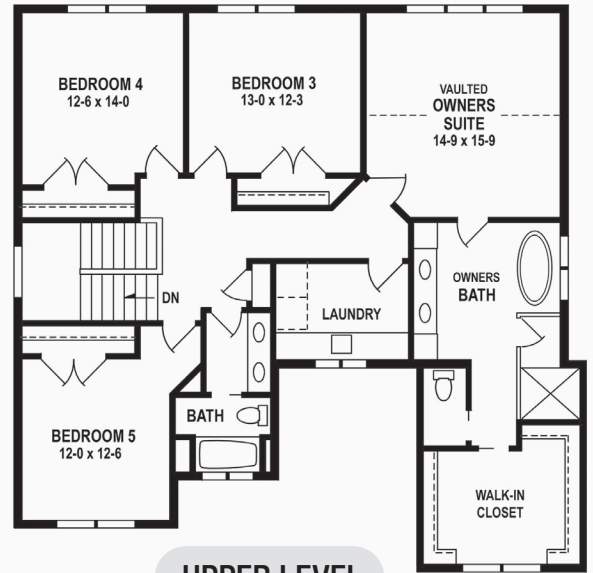


**Yvonne Perkins, REALTOR<sup>®</sup>**

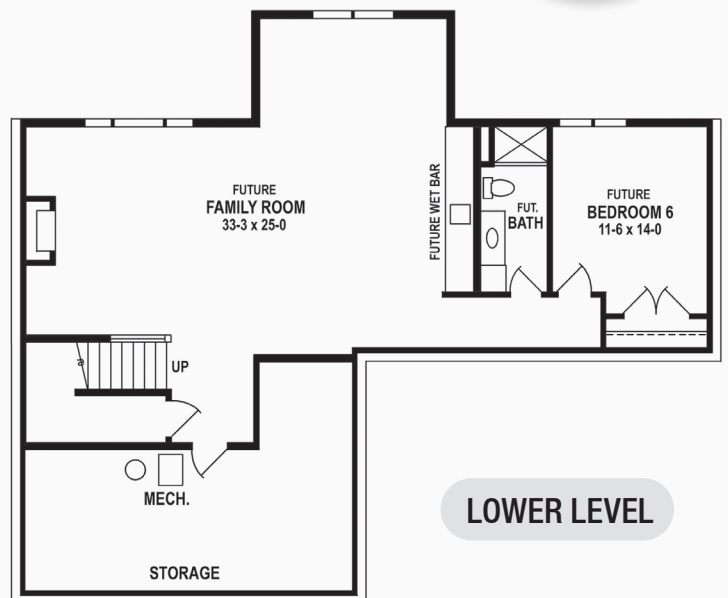
**612.709.1555 • YvonnePerkins@edinarealty.com**

# Coneflower Plan Layout

Featuring windows by:



*Elegant  
Design Details &  
Exceptional  
Craftsmanship*



Builders ID BC636389

507.366.1288 | jrbr.builders

